

N4V24..N4V120..N4V230



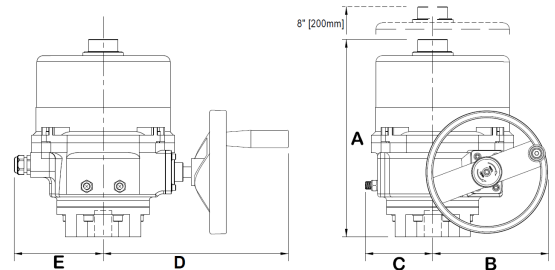
N4V24

Non Fail Safe, Rotary Actuator
400 Nm, On/Off



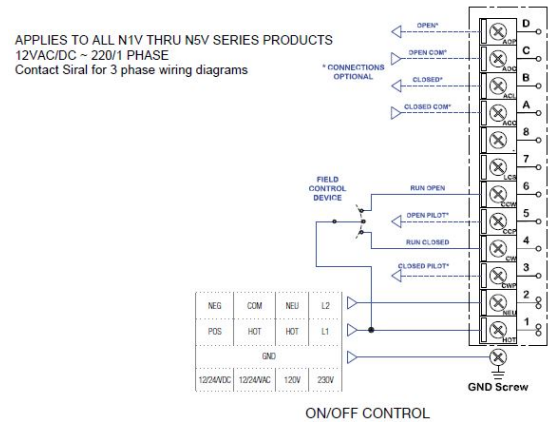
Electrical	Power supply	24VAC VCD
	Power Consumption (Start/Run/Hold)	7.0A / 5.8A / 15A
	Duty Cycle	0.75
	Motor Starts Per Hour	1200
	Motor Class	135°C / Class F
	Motor	24vdc Per Magnet Brush 40W
	Auxiliary Switch	(2) Rated at 10A 250VAC
Electrical Connection	Terminal Block:	N4V120
	Cable 3ft(1m):	
	Cable 9ft(3m):	
Control	Signal Input	On/Off
	Signal Feedback	On/off
General Function	Torque	400 Nm
	Running Time	Motor: 21
	Manual Override	Hand Wheel
	Rotation Angle	90°
	Linkage	ISO5211 compliant with double square female drive
	Adjustable Mechanical Stop	Two (2) External
	Position Indicator	Raised visual indicator
Environment	Ambient temperature	-22°F to +158°F (-30°C...70°C)
	Ambient humidity	95% r.h., non-condensing
Housing	Protection	NEMA 4X /IP67
	Material	Cast Aluminum
Agency Listings	Certification IEC/EN	CSA 267006
	Mode of Operation	
Weight	Weight approximate	49 lbs / 22kg

Dimensions



A	B	C	D	E
321 mm	187 mm	103 mm	297 mm	150 mm
12.64 in	7.36 in	4.06 in	11.7 in	5.91 in

Wiring Diagram



N4V24..N4V120..N4V230



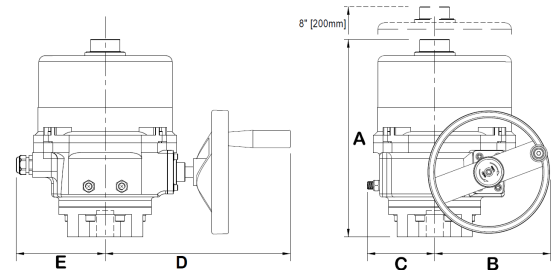
N4V120

Non Fail Safe, Rotary Actuator
400 Nm, On/Off



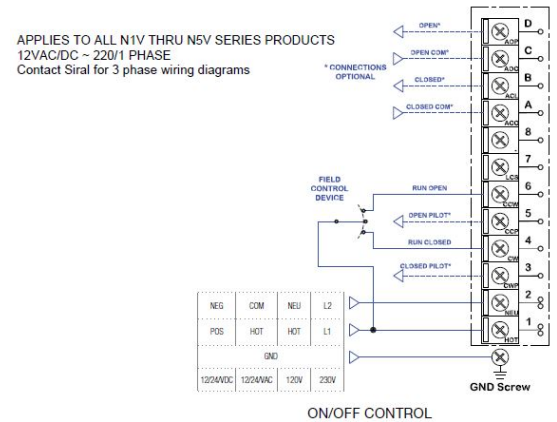
Electrical	Power supply	120VAC ±10%, 50/60Hz
	Power Consumption (Start/Run/Hold)	2.95A / 1.8A / 3.5A
	Duty Cycle	0.25
	Motor Starts Per Hour	1200
	Motor Class	135°C / Class F
	Motor	120vac Slit-Phase Cap 90W
	Auxiliary Switch	(2) Rated at 10A 250VAC
	Electrical Connection	Terminal Block: N4V120 Cable 3ft(1m): Cable 9ft(3m):
Control	Signal Input	On/Off
	Signal Feedback	On/off
General Function	Torque	400 Nm
	Running Time	Motor: 24 at 60Hz 29 at 50Hz
	Manual Override	Hand Wheel
	Rotation Angle	90°
	Linkage	ISO5211 compliant with double square female drive
	Adjustable Mechanical Stop	Two (2) External
	Position Indicator	Raised visual indicator
	Environment	Ambient temperature
	Ambient humidity	95% r.h., non-condensing
Housing	Protection	NEMA 4X /IP67
	Material	Cast Aluminum
Agency Listings	Certification IEC/EN	CSA 267006
	Mode of Operation	
Weight	Weight approximate	49 lbs / 22kg

Dimensions



A	B	C	D	E
321 mm	187 mm	103 mm	297 mm	150 mm
12.64 in	7.36 in	4.06 in	11.7 in	5.91 in

Wiring Diagram



N4V24..N4V120..N4V230



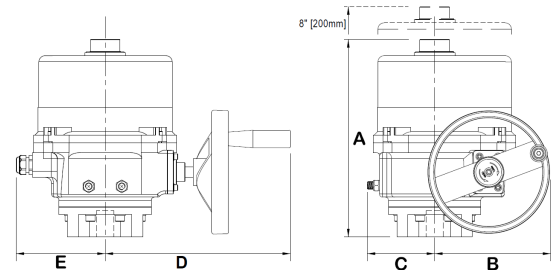
N4V230

Non Fail Safe, Rotary Actuator
400 Nm, On/Off



Electrical	Power supply	230VAC ±10%, 50/60Hz
	Power Consumption (Start/Run/Hold)	1.741A / 0.921A 1.9A
	Duty Cycle	0.25
	Motor Starts Per Hour	1200
	Motor Class	135°C / Class F
	Motor	120vac Slit-Phase Cap 90W
	Auxiliary Switch	(2) Rated at 10A 250VAC
	Electrical Connection	Terminal Block: N4V120 Cable 3ft(1m): Cable 9ft(3m):
Control	Signal Input	On/Off
	Signal Feedback	On/off
General Function	Torque	400 Nm
	Running Time	Motor: 24 at 60Hz 29 at 50Hz
	Manual Override	Hand Wheel
	Rotation Angle	90°
	Linkage	ISO5211 compliant with double square female drive
	Adjustable Mechanical Stop	Two (2) External
	Position Indicator	Raised visual indicator
	Environment	Ambient temperature
	Ambient humidity	95% r.h., non-condensing
Housing	Protection	NEMA 4X /IP67
	Material	Cast Aluminum
Agency Listings	Certification IEC/EN	CSA 267006
	Mode of Operation	
Weight	Weight approximate	49 lbs / 22kg

Dimensions



A	B	C	D	E
321 mm	187 mm	103 mm	297 mm	150 mm
12.64 in	7.36 in	4.06 in	11.7 in	5.91 in

Wiring Diagram

