

# V-NFV24 Actuator Series

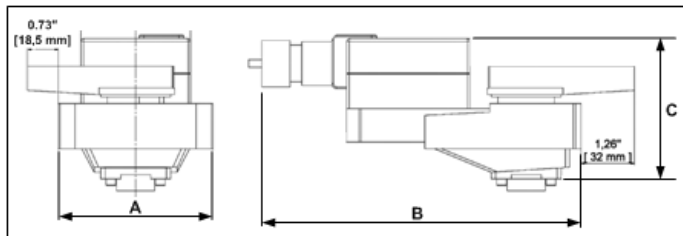
On/Off, Floating (3-Point), Modulating  
Non-Spring Return



Specification		(F) Floating, On/Off †	(M) Modulating †
Control	Signal	On/Off, Floating (3-Point)	2-10 VDC, 4-20mA
	Input Impedance	600 $\Omega$	100 k $\Omega$
	Feedback Signal		1-10 VDC
Power	Voltage AC	24 VAC 50/60 Hz $\pm$ 20%	
	Voltage DC	24 VDC $\pm$ 10%	
	Overload Protection	Electronic overload protection	
	Consumption Running	2.5 W	2.5 W
	Consumption Holding	0.2 W	0.4 W
	Transformer	6 VA (Class 2)	5 VA (Class 2)
	Connection	Terminals, Plenum rated cable 18 GA: 3 Ft.(1 m), 10 Ft. (3 m)	
Operation	Runtime (Motor)	90 seconds	
	Manual Override	Push-button	
	Rotation Angle	90°, adjustable using Screwed tabs	
	Rotation Direction	Direction Switch ↺ ↻	
	Position Indicator	Manual Knob	
Housing	Noise	45 dBA	
	Protection	NEMA 2 / IP54	
Temp.	Rating	UL94-5VA	
	Ambient	-22°F to 122°F (-30°C to 50°C)	
Agency Listing	Storage	-40°F to 176°F (-40°C to 80°C)	
	Humidity	5 to 95% non-condensing	
Agency Listing		<ul style="list-style-type: none"> <li>• cULus UL 60730-1A/-2-14,</li> <li>• CAN/CSA E60730-1:02,</li> <li>• CE according to 2004/108/EC and 2006/95/EC for line voltage</li> </ul>	

† Rated impulse voltage 800V, Control pollution degree 3, Type of action 1

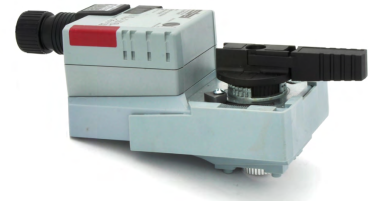
## Dimensions



A		B		C	
inch	mm	inch	mm	inch	mm
2.6	66	8.82	224	3.31	84

Meets cULus or UL and CSA requirements without the need of an electrical ground connection.

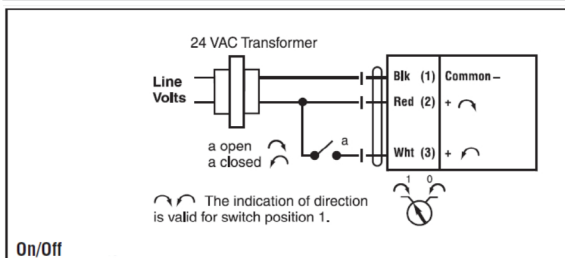
Floating, On/Off: V-NFV24F  
Modulating: V-NFV24M



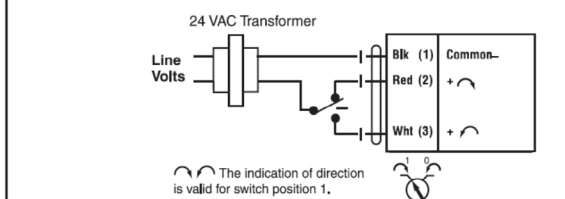
## WARNING

Connect the Actuator Common to the Controller Hot connection. Actuator must be installed by licensed or electrically trained technician. Failure to follow electrical safety precaution when working with live electrical connection could result in injury or death.

## Floating and On/Off Wiring

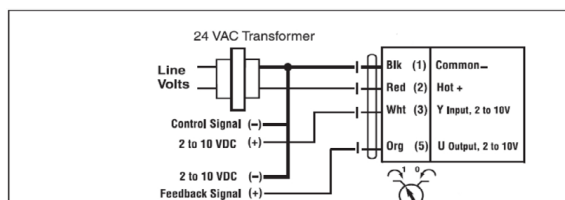


On/Off

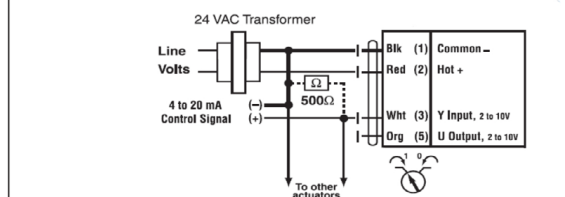


Floating Point or On/Off

## Modulating Wiring



2 to 10 VDC



4 to 20 mA